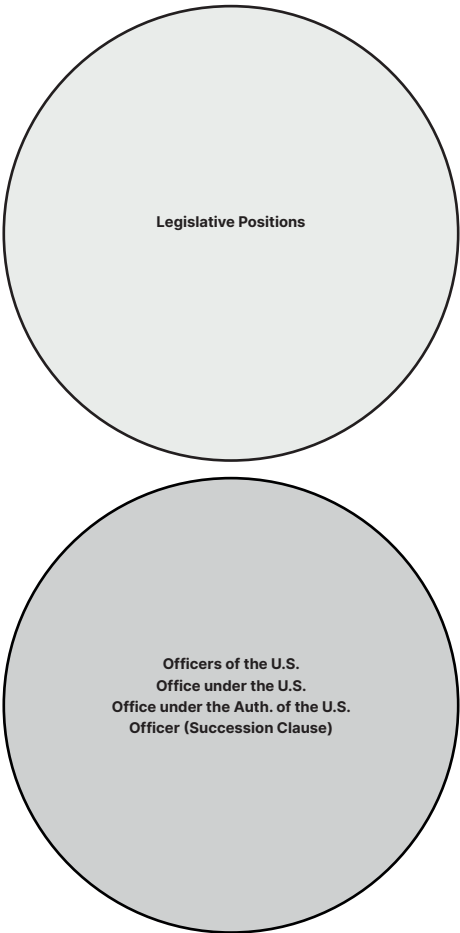


Figure 1

# Approach #1 - Intermediate View



**Figure 2**

# Approach #1 - Intermediate View

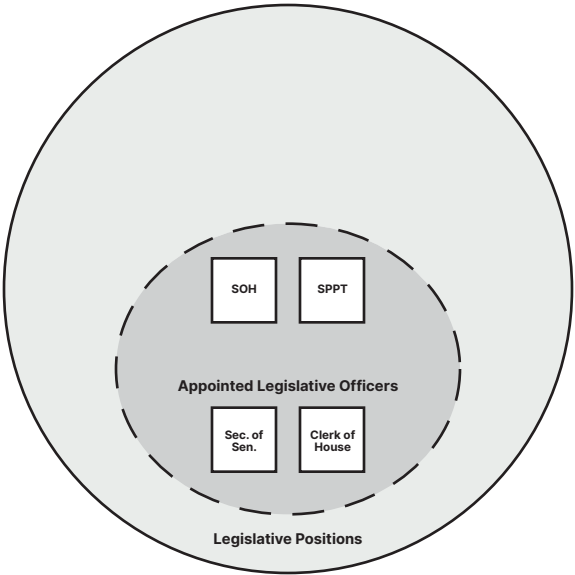


Figure 3

# Approach #1 - Intermediate View

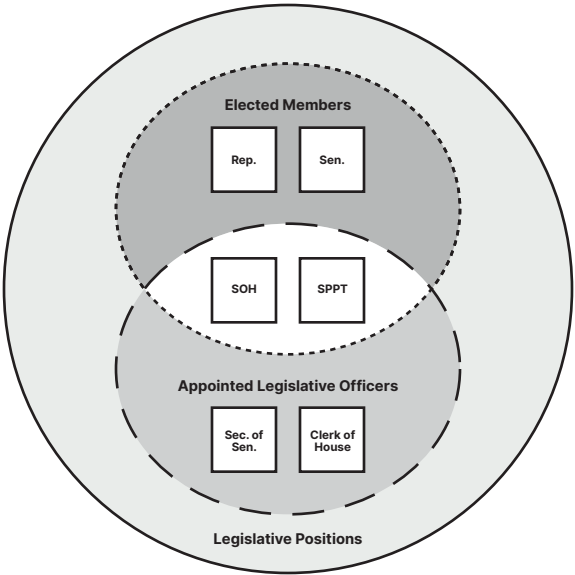


Figure 4

# Approach #1 - Intermediate View

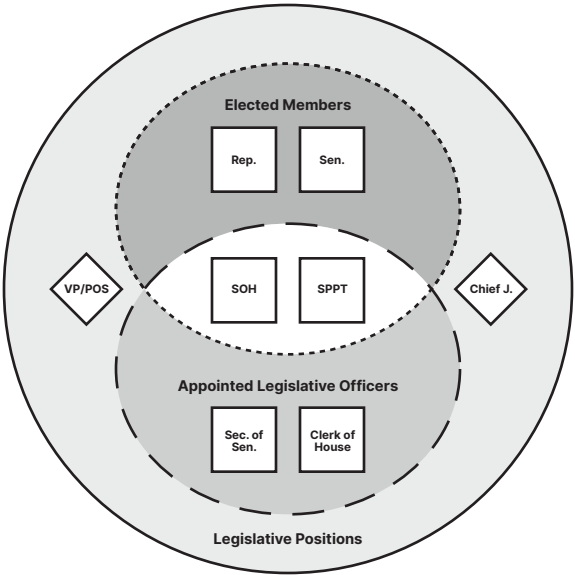


Figure 5

# Approach #1 - Intermediate View

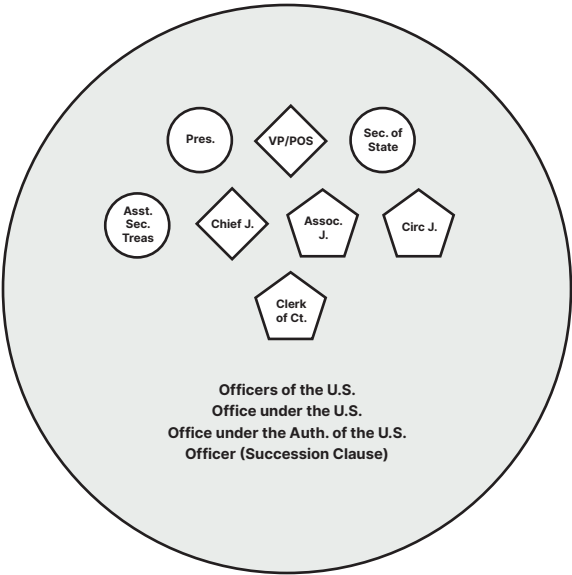


Figure 6

# Approach #1 - Intermediate View

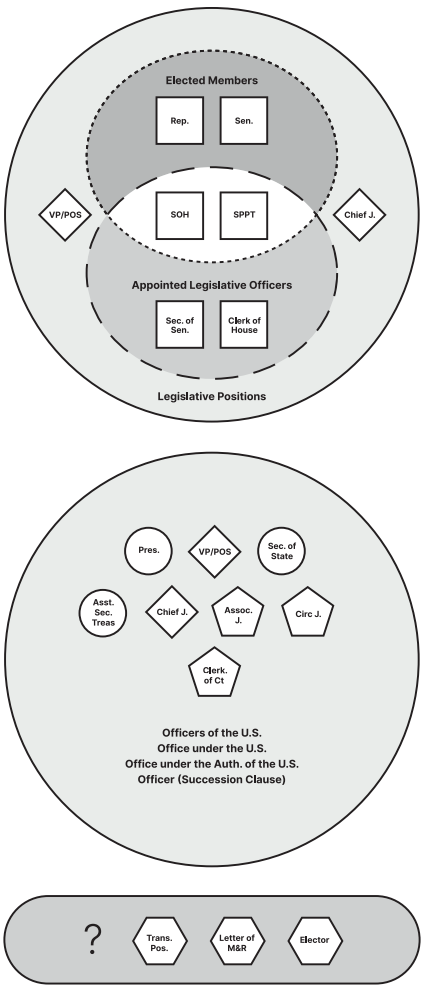


Figure 7

# Approach #2 - Maximalist View

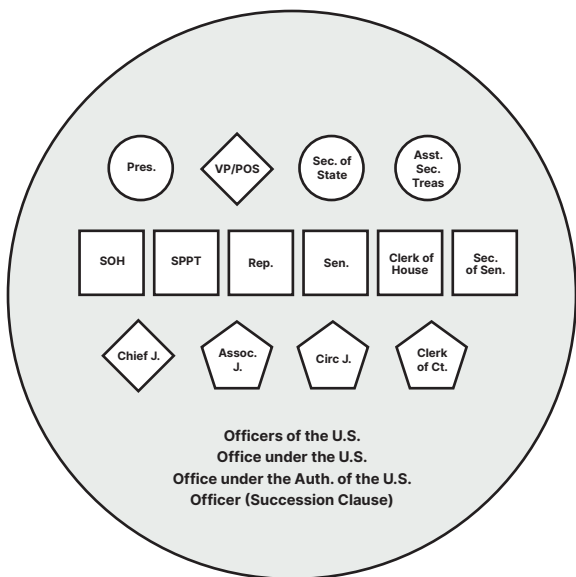


Figure 8



# Approach #2 - Maximalist View

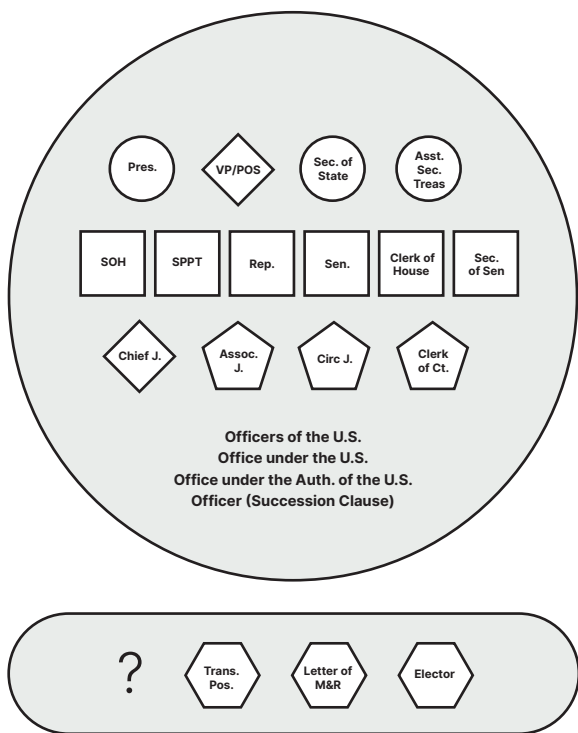
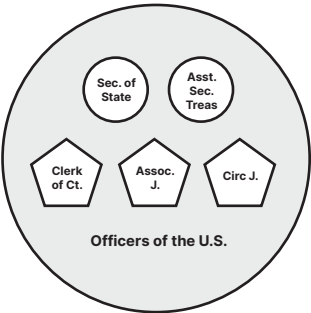


Figure 9

# Approach #3 - Minimalist View

Officers of the U.S.

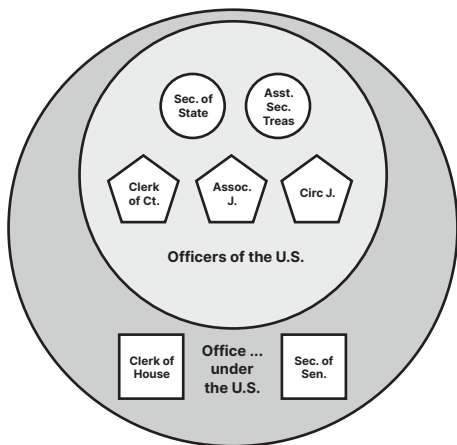


Officers of the U.S.	
Appointments Cl. (Art. II, § 2)	
Commissions Cl. (Art. II, § 3)	
Impeachment Cl. (Art. II, § 4)	
Oath Cl. (Art. VI)	

Figure 10

# Approach #3 - Minimalist View

Officers of the U.S. and Office ... under the U.S.



## Officers of the U.S.

Appointments Cl. (Art. II, § 2)

Commissions Cl. (Art. II, § 3)

Impeachment Cl. (Art. II, § 4)

Oath Cl. (Art. VI)

## Office ... under the U.S.

Incompatibility Cl. (Art. I, § 6)

Impeachment Disq. Cl. (Art. I, § 3)

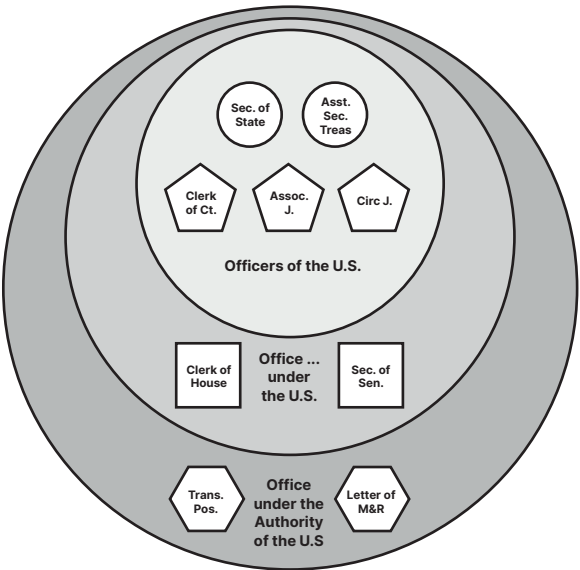
Foreign Emoluments Cl. (Art. I, § 9)

Elector Incompatibility Cl. (Art. II, § 1)

Figure 11

# Approach #3 - Minimalist View

Officers of the U.S., Office ... under the U.S.,  
and Office under the Authority of the U.S.



**Officers of the U.S.**

Appointments Cl. (Art. II, § 2)

Commissions Cl. (Art. II, § 3)

Impeachment Cl. (Art. II, § 4)

Oath Cl. (Art. VI)

**Office . . . under the U.S.**

Incompatibility Cl. (Art. I, § 6)

Impeachment Disq. Cl. (Art. I, § 3)

Foreign Emoluments Cl. (Art. I, § 9)

Elector Incompatibility Cl. (Art. II, § 1)

**Office under the Authority of the U.S.**

Ineligibility Cl. (Art. I, § 6)

Figure 12

# Approach #3 - Minimalist View

“Office or Public Trust under the U.S.”

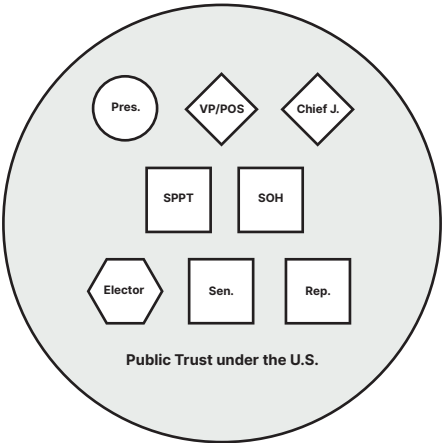


Figure 13

# Approach #3 - Minimalist View

“Office or Public Trust under the U.S.”

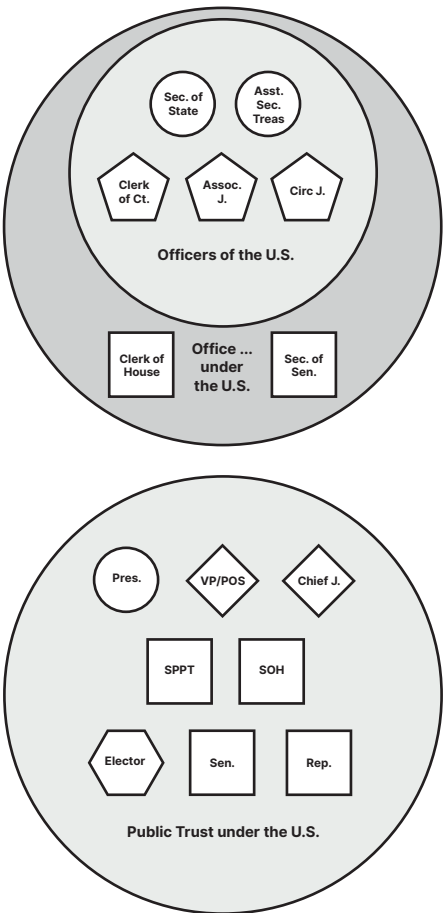
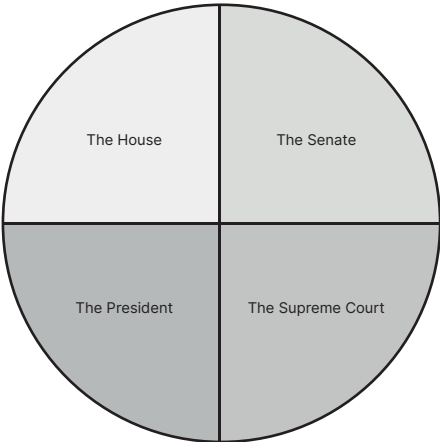


Figure 14

# Approach #3 - Minimalist View

Necessary & Proper Cl. - "The Gov. of the U.S."



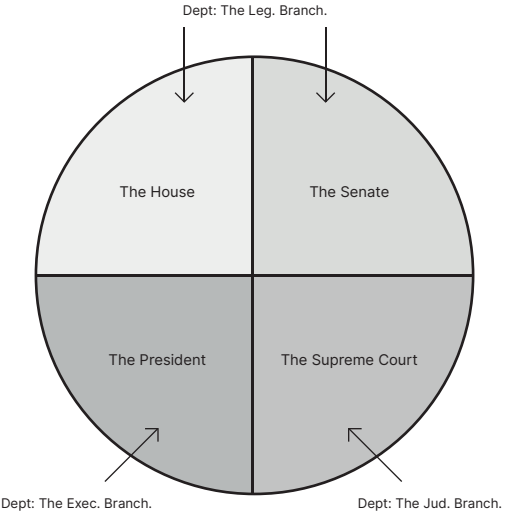
**The Gov. of the U.S. (N&P Cl.)**

"...all other Powers vested by this Constitution in  
**the Government of the United States,**  
or in any Department or Officer thereof."

**Figure 15**

# Approach #3 - Minimalist View

“The Gov. of the U.S.”  
and Dept. of the Gov. of the U.S.



**The Gov. of the U.S. (N&P Cl.)**

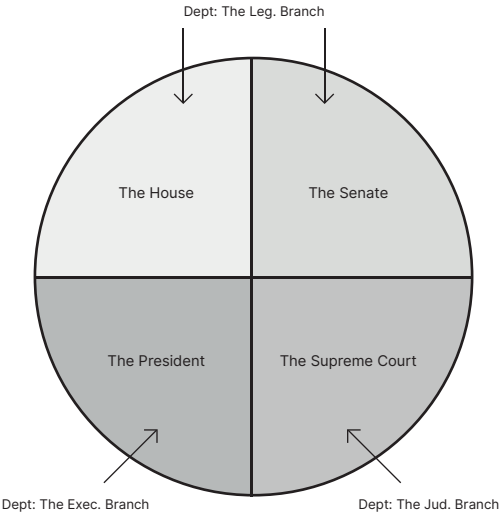
“...all other Powers vested by this Constitution in  
**the Government of the United States,**  
or in any **Department** or Officer thereof.”

**Figure 16**



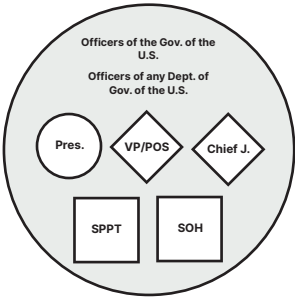
# Approach #3 - Minimalist View

Necessary & Proper Cl.



**The Gov. of the U.S. (N&P Cl.)**

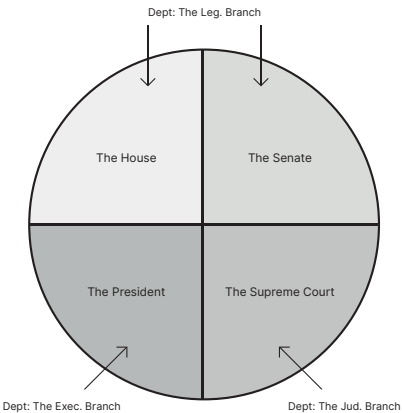
“...all other Powers vested by this Constitution in  
**the Government of the United States,**  
or in any **Department** or **Officer** thereof.”



**Figure 17**

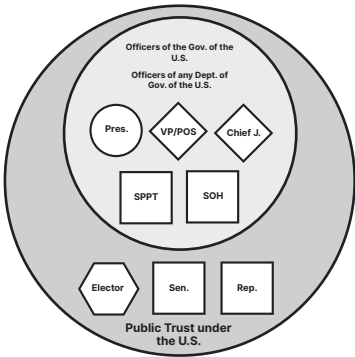
# Approach #3 - Minimalist View

Necessary & Proper Cl.  
and "Public Trust under the U.S."



The Gov. of the U.S. (N&P Cl.)

"...all other Powers vested by this Constitution in  
the **Government of the United States**,  
or in any **Department** or **Officer** thereof."

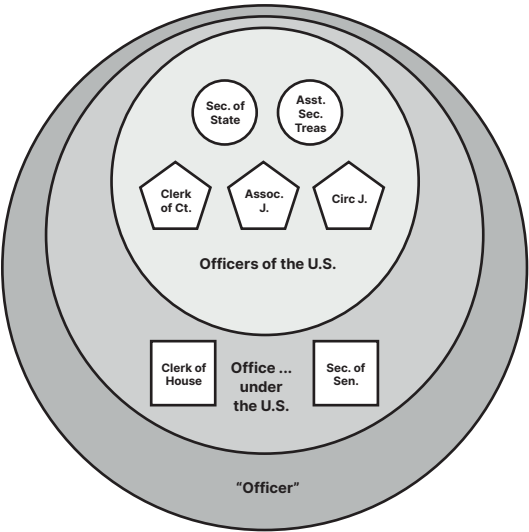


"no religious Test shall ever be  
required as a Qualification to any ...  
**public Trust under the United States.**"

Figure 18

# Approach #3 - Minimalist View

“Officer” in the Succession Clause



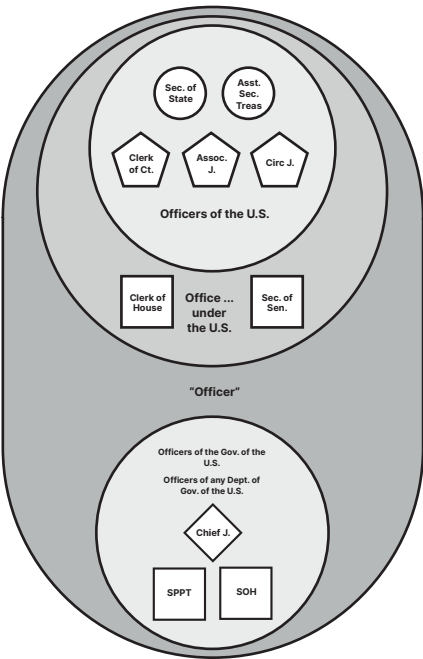
## The Succession Clause

“... the Congress may by Law provide for the Case of Removal, Death, Resignation or Inability, both of the President and Vice President, declaring what **Officer** shall then act as President, and such **Officer** shall act accordingly, until the Disability be removed, or a President shall be elected.”

Figure 19

# Approach #3 - Minimalist View

“Officer” in the Succession Clause



### The Succession Clause

“... the Congress may by Law provide for the Case of Removal, Death, Resignation or Inability, both of the President and Vice President, declaring what **Officer** shall then act as President, and such **Officer** shall act accordingly, until the Disability be removed, or a President shall be elected.”

Figure 20

# Approach #4 - The Clause-Bound View

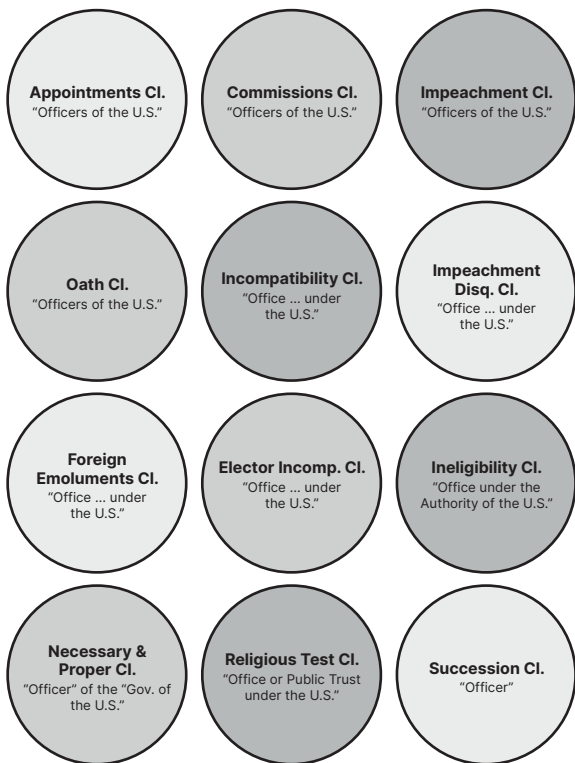


Figure 21