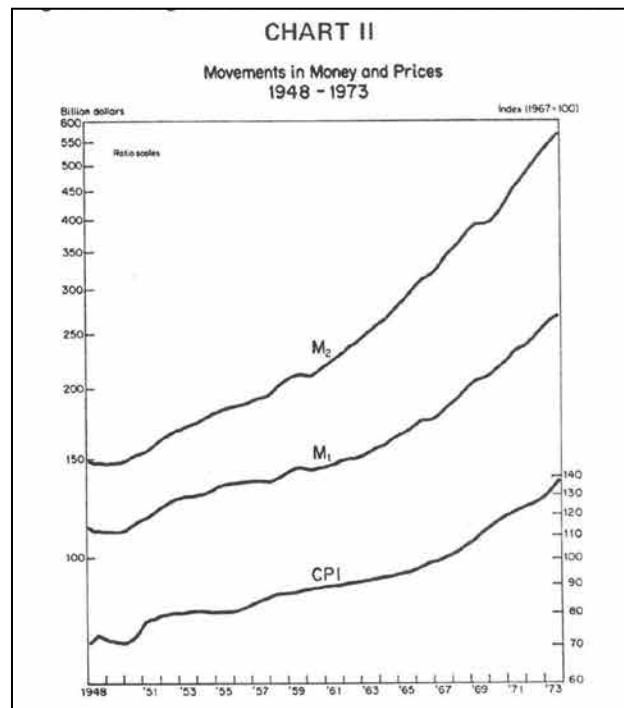
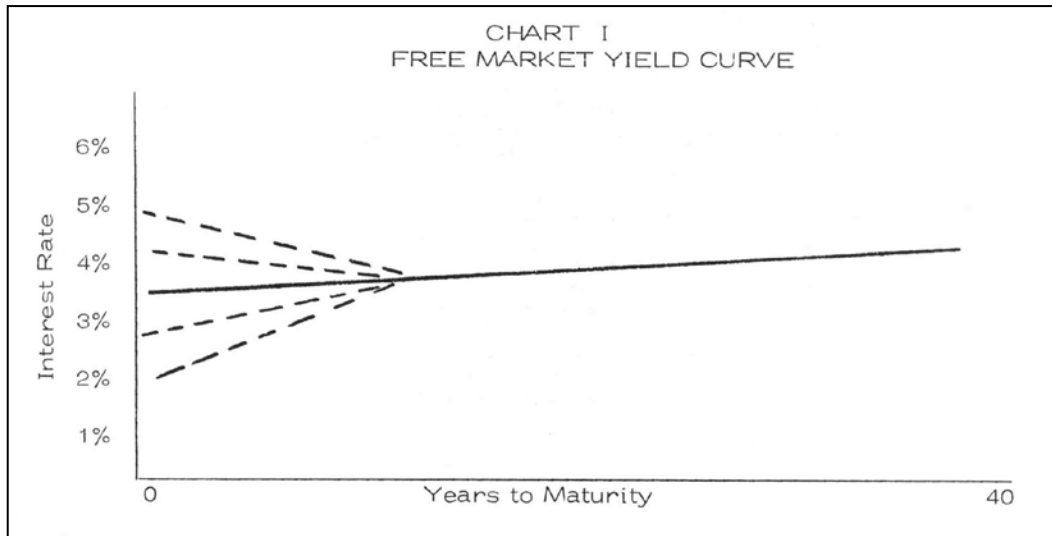


# All You Ever Wanted to Know About Bonds Charts

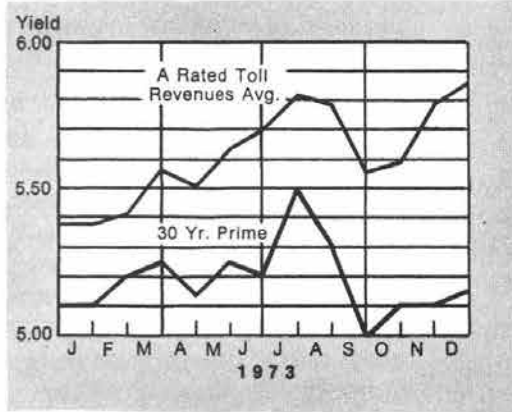


**CHART III**  
TAXABLE YIELD EQUIVALENTS

Tax-Exempt Coupon:	4%	4½%	5%	5½%	6%	6½%	7%
\$12,000	6.3	7.0	7.8	8.6	9.4	10.2	10.9
16,000	6.9	7.8	8.6	9.5	10.3	11.3	12.1
20,000	7.7	8.7	9.6	10.6	11.5	12.5	13.5
24,000	8.0	9.0	10.0	11.0	12.0	13.0	14.0
28,000	8.5	9.6	10.6	11.7	12.8	13.8	14.9
32,000	8.9	10.0	11.1	12.2	13.3	14.4	15.6
40,000	9.5	10.7	11.9	13.1	14.3	15.5	16.7
50,000	10.5	11.8	13.2	14.5	15.8	17.1	18.4
60,000	11.1	12.5	13.9	15.3	16.7	18.1	19.4
80,000	12.5	14.1	15.6	17.2	18.8	20.3	21.9
100,000	13.3	15.0	16.7	18.3	20.0	21.7	23.3

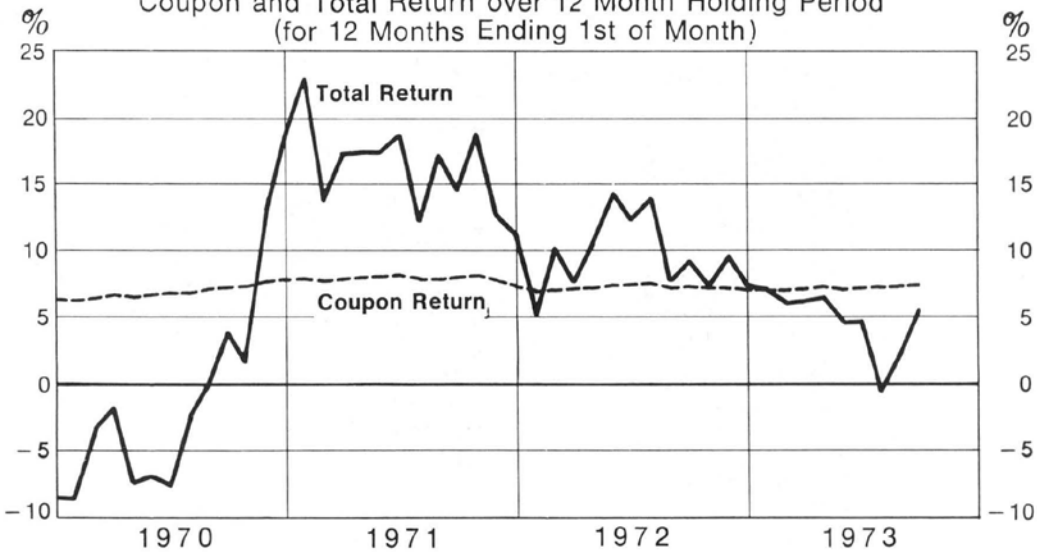
**CHART IV**

**MUNICIPAL BOND YIELDS--GENERAL OBLIGATIONS AND REVENUES**



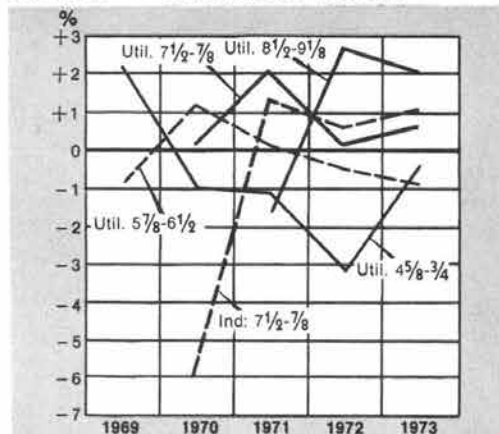
**CHART V**

**Coupon and Total Return over 12 Month Holding Period (for 12 Months Ending 1st of Month)**



**CHART VI**

**INCREMENTAL RELATIVE PERFORMANCE ABOVE THE COMPOSITE RETURN\* -- CALENDAR YEARS**



\* Based on Salomon Brothers High Grade Corporate Bond Performance Index. Descriptive memo on request.